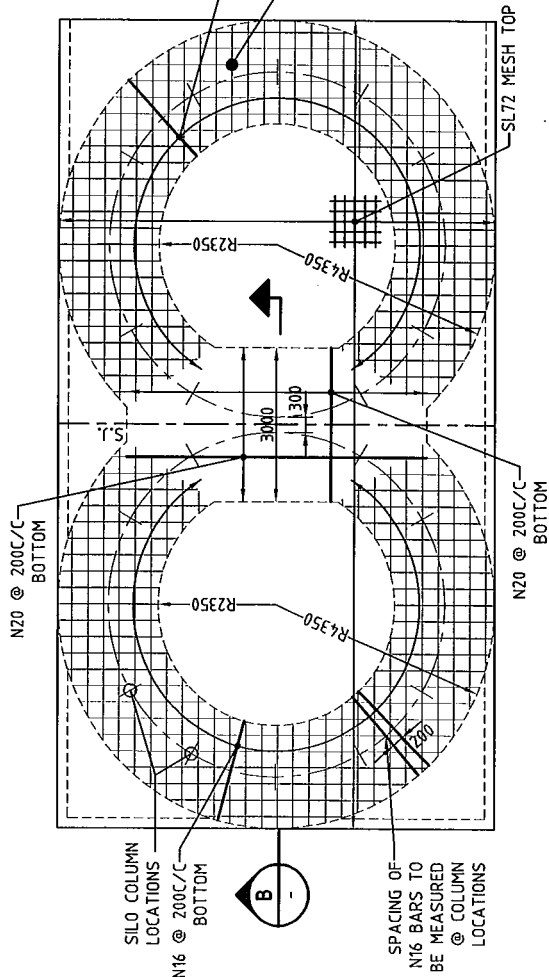
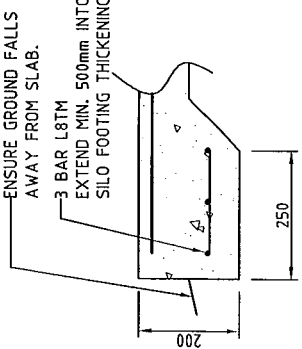


Silos 300mm apart.

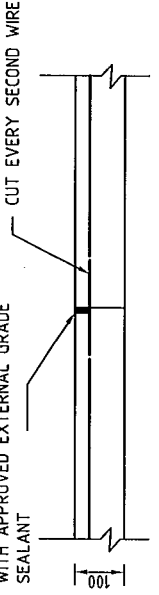


ALL FOOTINGS TO BE FOUNDED ON STABLE GROUND WITH MINIMUM BEARING CAPACITY OF 100kPa

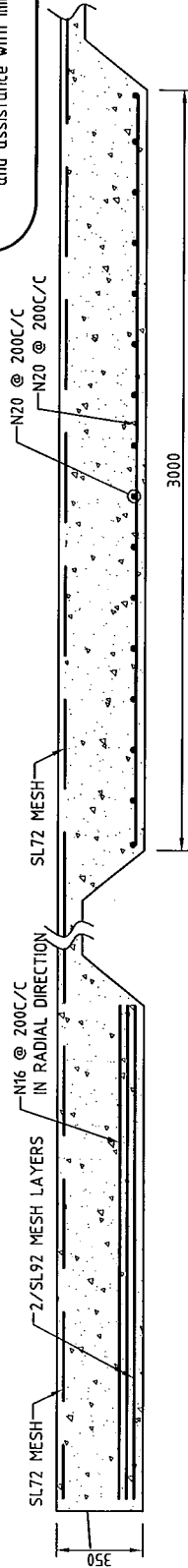


TWO SILO FOOTING LAYOUT
SCALE 1 : 100

SAW CUT 25 DEEP WITHIN ONE DAY OF PLACING OF CONCRETE, FILL WITH APPROVED EXTERNAL GRADE SEALANT



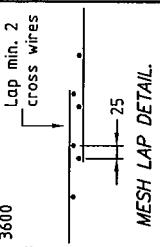
EDGE BEAM DETAIL SCALE 1 : 10
SAWN JOINT DETAIL (S.J.) SCALE 1 : 10



SECTION B
SCALE 1:20

CONCRETE CONSTRUCTION NOTES :-

- All work to be in accordance with AS 3600
- Concrete strengths to be as follows :
LOCALITY F_c (MPa)
ALL CONCRETE 32
- Max. aggregate size :- 20mm
- Slump = 80 +/- 15mm
- Sample and test to AS 3600
- Consolidate by vibration
- N denotes Tempcore bars, SL denotes mesh, R denotes round bars.
- Provide adequate bar and mesh supports at 900 max. crs.
- Cover to reinforcement :-
SLAB MESH 40 TOP COVER
FOUNDATIONS 50 ALL ROUND
- All reinforcement to be inspected by engineer before pouring of concrete. Contractor to notify 24 hours in advance.
- All formwork to be designed, constructed and stripped in accordance with AS 3610.
- All reinforcement splices to be full tension splices unless noted otherwise.
- Cure all concrete a minimum 7 days.
- All footings are to be found on material having a minimum bearing capacity of 150 kPa.



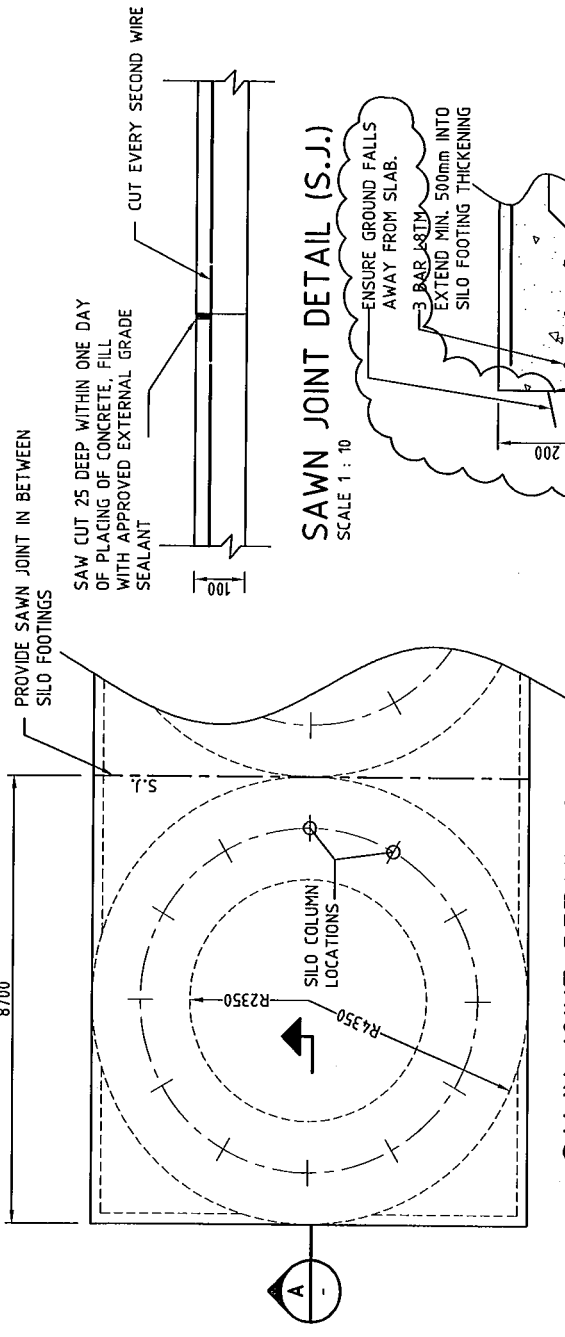
SAFETY IN DESIGN

- Notice to all persons who commissioned the design work depicted in these documents.
This notice is also relevant to all those involved in the construction of the works, its operation and demolition.
The construction of these works involves activities which has some risk to the health and safety of those :-
(a) involved in the construction, and those who are not involved in the construction but enter the construction site.
(b) who use the facility. This facility requires maintenance to maintain its initial level of safety. Note that maintenance activities also carry health and safety risks.
The eventual demolition of these works will involve activities which has some risk to health and safety.
Please contact Osborn Consulting Engineers for information and assistance with minimising these risks.
-
-
-

BUILDER TO VERIFY ALL INFORMATION & DIMENSIONS ON THIS DRAWING ON SITE PRIOR TO COMMENCEMENT OF FABRICATION / CONSTRUCTION

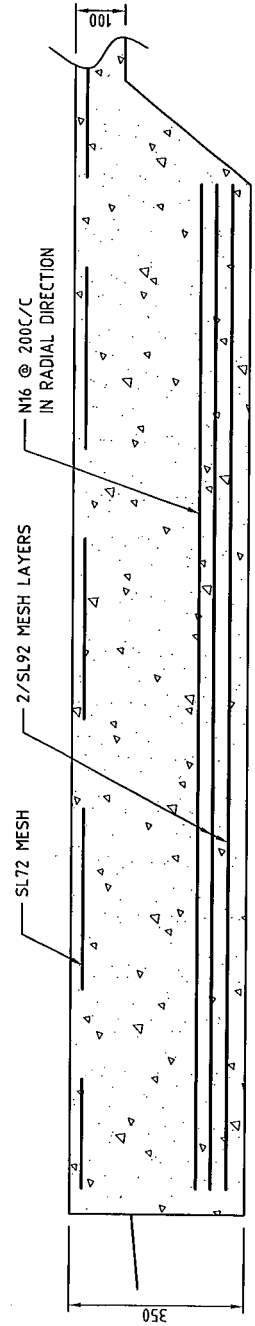
NOTES :- 1. Builder to verify all information & dimensions on site prior to commencement of construction 2. DO NOT SCALE DRAWINGS	DETAIL AMENDED 10/09/15 J.D.T.D	260 TONNE SILO FOUNDATION (ALTERNATIVE REINFORCEMENT) drawn: J.D. (Aut. '15) designed/ D.L. checked: P/a certified: P/a scale: As Shown job no.: Sheet 3 of 3 IP15-0080 - S3
	PRELIMINARY ISSUE 10/09/15 J.D. P/a description: issued: by: rev:	

FOOTING WITH MESH



SAWN JOINT DETAIL (S.J.)
SCALE 1 : 100

EDGE BEAM DETAIL
SCALE 1 : 10



ALL FOOTINGS TO BE FOUNDED ON STABLE GROUND WITH MINIMUM BEARING CAPACITY OF 100kPa

SECTION A
SCALE 1:10

CONCRETE CONSTRUCTION NOTES :-

- All work to be in accordance with AS 3600
- Concrete strengths to be as follows :
LOCALITY F-c (MPa)
ALL CONCRETE 32
- Max. aggregate size :- 20mm
- Slump = 80 +/- 15mm
- Sample and test to AS 3600
- Consolidate by vibration
- N denotes Tempcore bars, SL denotes mesh, R denotes round bars.
- Provide adequate bar and mesh supports at 900 max. crs.
- Cover to reinforcement :-
SLAB MESH 40 TOP COVER
FOUNDATIONS 50 ALL ROUND
- All reinforcement to be inspected by engineer before pouring of concrete. Contractor to notify 24 hours in advance.
- All formwork to be designed, constructed and stripped in accordance with AS 3610.
- All reinforcement splices to be full tension splices unless noted otherwise.
- Cure all concrete a minimum 7 days.
- All footings are to be found on material having a minimum bearing capacity of 150 kPa.



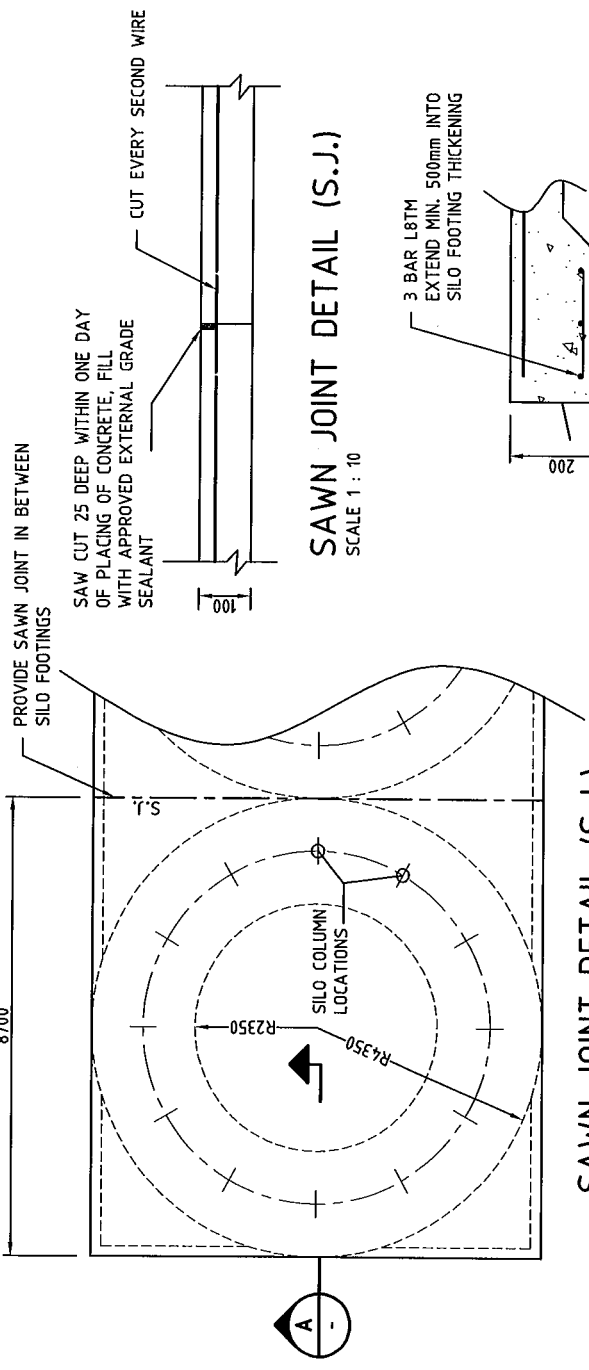
SAFETY IN DESIGN

- Notice to all persons who commissioned the design work depicted in these documents.
This notice is also relevant to all those involved in the construction of the works, its operation and demolition.
- The construction of these works involves activities which has some risk to the health and safety of those :-
(a) involved in the construction, and those who are not involved in the construction but enter the construction site.
(b) who use the facility. This facility requires maintenance to maintain its initial level of safety. Note that maintenance activities also carry health and safety risks.
- The eventual demolition of these works will involve activities which has some risk to health and safety.
Please contact Osborn Consulting Engineers for information and assistance with minimising these risks.
-

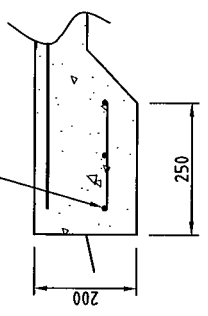
BUILDER TO VERIFY ALL INFORMATION & DIMENSIONS ON THIS DRAWING ON SITE PRIOR TO COMMENCEMENT OF FABRICATION / CONSTRUCTION

NOTES :- 1. Builder to verify all information & dimensions on site prior to commencement of construction 2. DO NOT SCALE DRAWINGS	DETAIL AMENDED 10/09/15 J.D. D	issued: by: rev:
	DETAIL AMENDED 10/09/15 J.D. B	37/08/15 J.D. A
	CONSTRUCTION ISSUE 37/08/15 J.D. A	description:
D.E. ENGINEERS 260 TONNE SILO FOUNDATION		
260 TONNE SILO FOUNDATION (ALTERNATIVE REINFORCEMENT) drawn: J.D. / Jul. '15 designed/ D.L. checked: B certified: As Shown job no.: IP15-0080 - S2 Sheet 2 of 3		

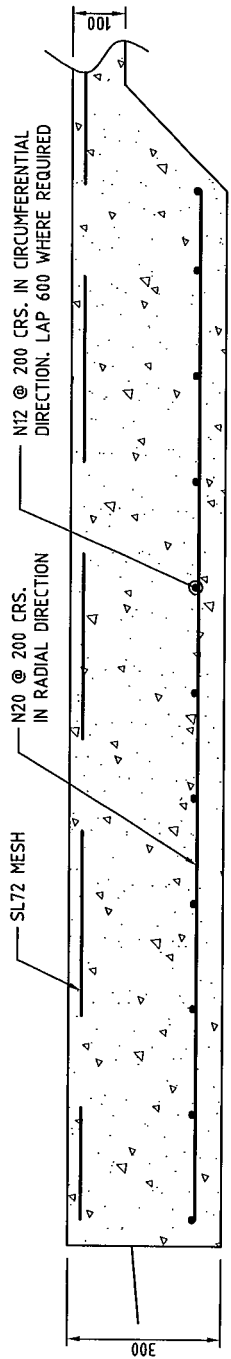
Footings with reo-war.



SAWN JOINT DETAIL (S.J.)
SCALE 1 : 100



EDGE BEAM DETAIL
SCALE 1 : 10



SECTION A
SCALE 1:10

ALL FOOTINGS TO BE FOUNDED ON STABLE GROUND WITH MINIMUM BEARING CAPACITY OF 100kPa

CONCRETE CONSTRUCTION NOTES :-

1. All work to be in accordance with AS 3600
2. Concrete strengths to be as follows :
LOCALITY ALL CONCRETE 32
F_c (MPa)
Lap min. 2 cross wires
3. Max. aggregate size :- 20mm
4. Slump = 80 +/- 15mm
5. Sample and test to AS 3600
6. Consolidate by vibration
7. N denotes Tempcore bars, SL denotes mesh,
8. Provide adequate bar and mesh supports at 900 max. crs.
9. Cover to reinforcement :-
SLAB MESH 40 TOP COVER
FOUNDATIONS 50 ALL ROUND
10. All reinforcement to be inspected by engineer before pouring of concrete. Contractor to notify 24 hours in advance.
11. All formwork to be designed, constructed and stripped in accordance with AS 3610.
12. All reinforcement splices to be full tension splices unless noted otherwise.
13. Cure all concrete a minimum 7 days.
14. All footings are to be found on material having a minimum bearing capacity of 150 kPa.



SAFETY IN DESIGN

1. Notice to all persons who commissioned the design work depicted in these documents.
This notice is also relevant to all those involved in the construction of the works, its operation and demolition.
2. The construction of these works involves activities which has some risk to the health and safety of those :-
(a) involved in the construction, and those who are not involved in the construction but enter the construction site.
(b) who use the facility. This facility requires maintenance to maintain its initial level of safety. Note that maintenance activities also carry health and safety risks.
3. The eventual demolition of these works will involve activities which has some risk to health and safety.
Please contact Osborn Consulting Engineers for information and assistance with minimising these risks.
- 4.

BUILDER TO VERIFY ALL INFORMATION & DIMENSIONS ON THIS DRAWING ON SITE PRIOR TO COMMENCEMENT OF FABRICATION / CONSTRUCTION

	D.E. ENGINEERS	260 TONNE SILO FOUNDATION	260 TONNE SILO FOUNDATION
DETAILS & NOTES			
drawn: [initials]	designed/checked: [initials]		
certified: [initials]	scale: As Shown	job no.:	dwg no.
		Sheet 1 of 1	
description:		issued: [initials]	by: [initials]