

# DE Engineers

WA's leader in Field Bin Design, Quality & Innovation



## **Stronger:**

D.E. field bins are guaranteed not to crumple while loading by using the heaviest wall section and base construction in the industry. These bins are also fitted with heavy duty 2 tonne axles on single axle field bins with 'New' Landcruiser tires and rims, walking beam axles are on field bins over 50 tonne capacity for a much smoother ride and all bins are fitted with PTO slip clutches to protect the driveline.

## **Faster more efficient:**

D.E. field bins use a large vibration free gearbox drive which runs smoother and faster (in excess of 450rpm) than traditional 'double universal joints' to shift more grain faster, have the largest (weather tight) double opening doors for ease of filling and taller, steeper augers that fill trucks easily while being less likely to be damaged by grain trucks.

## **Longer lasting:**

DE Field bin bases are guaranteed to last longer with 'hot dipped' galvanized pipe construction and fully welded base sheets (not riveted). HDG galvanized pipe has 3 times more zinc coating than square tube that some manufacturers use.

## **Innovative:**

DE Engineers offer many unique innovations not available on other bins, these include: Twin tow gearbox's, rear tow hitches, manual auger choke plates, remote control elec-

### **DE ENGINEERS**

131 Clayton Street Bellevue, Western Australia, 6056.

Silo complex: Lot 16 Leeming Rd Grass Valley, WA, 6403

Phone: 08 9274 2632 Fax: 08 9274 6618 FREECALL 1800 633 666

e-mail: [info@deengineers.com.au](mailto:info@deengineers.com.au) Website : [www.deengineers.com.au](http://www.deengineers.com.au)

ABN 26 529 822 454



# Features



**‘Super Strong Bases’:** Field bins often crumple when placed on uneven ground. So to resist this, our “**Super strong**” bases have heavier diagonal bracing to share loads between a number of legs preventing “point loading”, the most common cause of silo wall collapse.



## **Patented “Easy Hitch” :**

This allows the tractor and P.T.O. shaft to remain constantly attached, the bin simply drops to the ground while filling.



## **Stronger axles:**

DE Silos are the only manufacturer to fit heavy duty 2 tonne axles and hubs to all 45t field bins to prevent axles bending through transport.



## **“Walking Beam Axle”**

On larger field bins to reduce stress on the bin and towing vehicle during transport towing.

Nb/-Landcruiser tyres and rims are standard.





**Larger doors:** Our field bins have the largest roof doors available and are a significant feature allowing easier filling. By fully supporting the underside of the roof and doors with a RHS framework this retains the shape of the roof so doors close properly every time. Hinges are made from 3mm stainless steel prevent seizing.

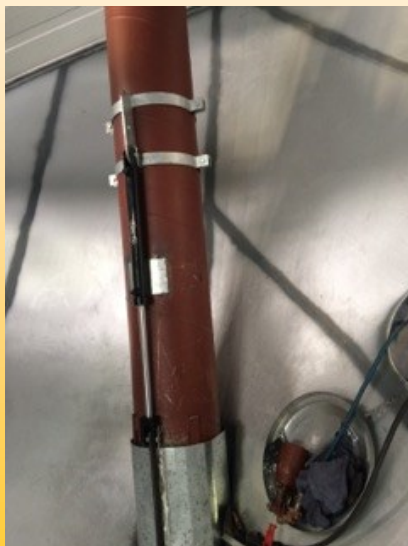


**Vibration free gearbox drive:** provide vibration free, faster running. This also allows a steeper auger angle, filling high trucks easier without the risk of trucks colliding with the barrel.

NB/- some manufacturers of Double Uni Drive type bins recommend a maximum of 350rpm and state 'an increase in PTO speed will not increase out loading speed' This is not true, as any increase in auger speed increases the amount of grain being moved.



**Choke plates:** 15" Augers are fitted with our innovative 'Auger Choke Plate' to reduce power requirements when new bins or smaller tractors and augers are fully engineered not to fail when operating. The last thing you want to worry about when loading trucks is having to shut down a hydraulic choke every time you stop the auger.



Hydraulic auger chokes are available though not necessary for general running.



DE Field bins often use more legs and stays for extra strength from hot dipped galvanised pipe for up to 3 times the corrosion resistance of square tube bases and longer lasting Zincalume is used on the base cones.



**The Strongest side wall profile and larger sight glasses:**

Guaranteed not to crumple while loading by being the only manufacturer to use thicker 1.6mm steel on the body of larger Field Bins and 1.2mm thick body on smaller 45t bins with the strongest wall profile. Sight glasses are twice the size of the industry standard for easier viewing.



**Ladders** are easier to climb being made from aluminium with 30mm square 'soft grip' rungs, the roof ladder has a handrail for added safety and have a fold up ladder for child protection.



**Rear tow hitch:** standard on all field bins as only De Engineers field bins can be towed in tandem.





### **Ground opening Doors:**

Our lid arms have a spring loaded handles to secure doors when open or closed to prevent the lids from vibrating open.



**Large cleanout slide:** The full width slide makes cleaning out the field bin much easier.



**‘Twin-Tow’ bins:** Are towed and operated by one tractor offering up to 90 tonnes of storage. The twin tow gearboxes can be fitted to all late model DE Engineers field bins.



**55hp "Electro Clutches"** (pat pending) Are just another innovative product which allow field bin operators to engage and disengage DE Engineers 15" augers without the need to run back to the tractor.